

SP221

Ladies' linen polo shirt

- Made from linen, a lightweight and breathable material.
- Fashionable dropped sleeves.

100% linen. Knit. Straight fit with dropped sleeves. Side slits with swallowtail finish. Collar with collar stand and V-shaped buttonless polo shirt placket in main material. Double over stitching on cuffs and bottom hem. Half-circle in the back.



Certifications



More information

Logistic



Country of origin



BD - Bangladesh

Customs code



61069050

Also available in version



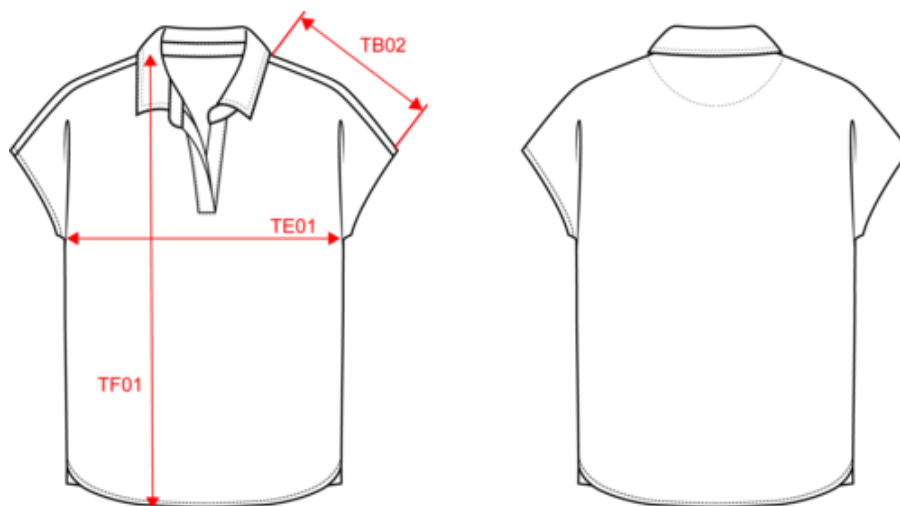
SP220



SP221

Ladies' linen polo shirt

Dimensions (cm)



Measurements in cm	XS	S	M	L
TB02 - Shoulder length	25.50	26.50	27.50	28.50
TE01 - 1/2 chest width at 1.5cm below armhole	48.50	51.50	54.50	57.50
TF01 - Total height from HSP	65.00	67.00	69.00	71.00

SP221

Ladies' linen polo shirt

Colours information



Black
 RVB : 35,35,37
 Pantone C : Black
 Pantone TCX : 19-4004TCX



Ivory
 RVB : 236,231,218
 Pantone C : 7534C
 Pantone TCX : 11-0701TCX



Light Olive Green
 RVB : 120,112,89
 Pantone C : 7497C
 Pantone TCX : 17-0517TCX



Navy Blue
 RVB : 41,45,57
 Pantone C : 433C
 Pantone TCX : 19-4010TCX



Organic Khaki
 RVB : 85,87,76
 Pantone C : 418C
 Pantone TCX : 19-0312TCX



Peacock Blue
 RVB : 34,57,75
 Pantone C : 7546C
 Pantone TCX : 19-4125TCX



Stone Grey
 RVB : 77,70,68
 Pantone C : Black 7C
 Pantone TCX : 19-0405TCX



Wet Sand
 RVB : 164,146,128
 Pantone C : 7536C
 Pantone TCX : 17-1312TCX

Logisti



10



50

Sizes	Width (cm)	Height (cm)	Length (cm)	Net weight (kg)	Gross weight (kg)	Pieces/Box	Pieces/Bundle
XS	40.00000	20.00000	60.00000	7.75000	9.05000	50	10
S	40.00000	20.00000	60.00000	8.25000	9.55000	50	10
M	40.00000	20.00000	60.00000	8.75000	10.05000	50	10
L	40.00000	20.00000	60.00000	9.25000	10.55000	50	10