

# NS406

## Unisex eco-friendly French Terry short sleeve drop shoulder hooded sweatshirt



85% organic cotton/15% post-consumer recycled polyester. Combed cotton. Regular fit with dropped shoulders. Enzyme-washed. French Terry 3-ply LST (Low Shrinkage Terry: pre-shrunk fleece). 1/2 circle in the back. 2-panel hood, lined in main fabric with over stitching all round. Embroidered eyelets. Flat drawstring with ribbed stitching finish. Minimalist side pockets. Rib 1 x 1 hem. Matching taped neck finish in the main material inside the collar.

 300 g/m<sup>2</sup> 

### Sizes

 XS S M L XL XXL 3XL

### More information

#### Logistic

 5

#### Country of origin

 20



BD - Bangladesh

#### Customs code



61102099

### Colours

   
Black Ivory

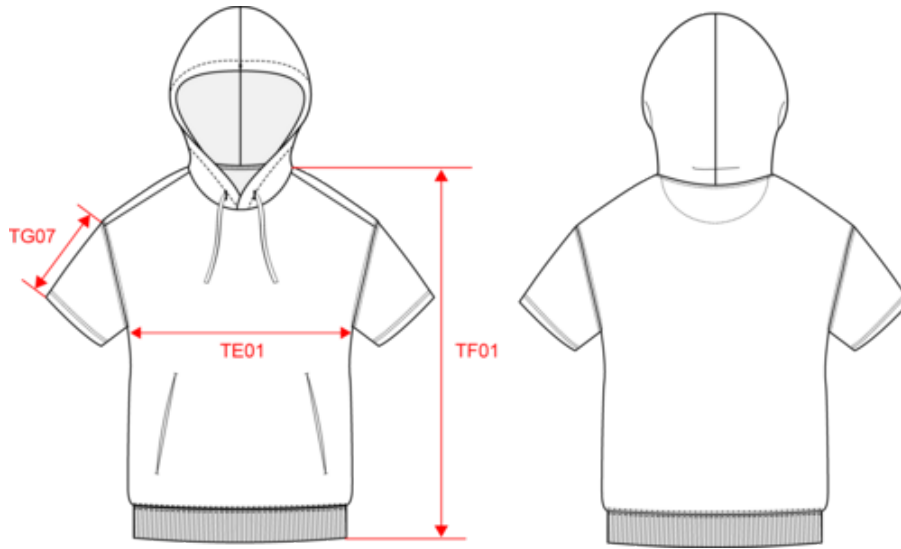
### Certifications



# NS406

Unisex eco-friendly French Terry short sleeve drop shoulder hooded sweatshirt

## Dimensions (cm)



Measurements in cm	XS	S	M	L	XL	XXL	3XL
TE01 - 1/2 chest width at 1.5cm below armhole	51.00	54.00	57.00	60.00	63.00	66.00	69.00
TF01 - Total height from HSP	67.00	69.00	71.00	73.00	75.00	77.00	79.00
TG07 - Short sleeve length	21.25	22.00	22.75	23.50	24.25	25.00	25.75

# NS406

## Unisex eco-friendly French Terry short sleeve drop shoulder hooded sweatshirt

### Colours information



**Black**  
 RVB : 35,35,37  
 Pantone C : Black  
 Pantone TCX : 19-4004TCX



**Ivory**  
 RVB : 236,231,218  
 Pantone C : 7534C  
 Pantone TCX : 11-0701TCX

### Logistic



5



20

Sizes	Width (cm)	Height (cm)	Length (cm)	Net weight (kg)	Gross weight (kg)	Pieces/Box	Pieces/Bundle
XS	40.00000	28.00000	60.00000	10.00000	11.25000	20	5
S	40.00000	28.00000	60.00000	10.05000	11.50000	20	5
M	40.00000	28.00000	60.00000	10.55000	12.00000	20	5
L	40.00000	28.00000	60.00000	11.25000	12.70000	20	5
XL	40.00000	28.00000	60.00000	11.85000	13.30000	20	5
XXL	40.00000	28.00000	60.00000	12.45000	13.90000	20	5
3XL	40.00000	28.00000	60.00000	13.45000	14.90000	20	5