




**About**

- Made from organic cotton.
- Enzyme-washed for a perfectly clear printing surface.
- No label: 100% customisable to your brand.

100% organic cotton. Straight fit. Combed cotton. Jersey knit. Enzyme-washed. 1x1 ribbed neck. Reinforced shoulders. Double over stitching on cuffs and hem. Matching taped neck finish in the main material inside the collar.

 180 g/m<sup>2</sup> 

**Sizes**

 4/6 ans 6/8 ans 8/10 ans 10/12 ans 12/14 ans

**More information**

**Logistic**

 10

 50

**Country of origin**



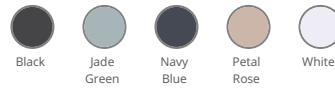
BD - Bangladesh

**Customs code**



61091000

**Colours**

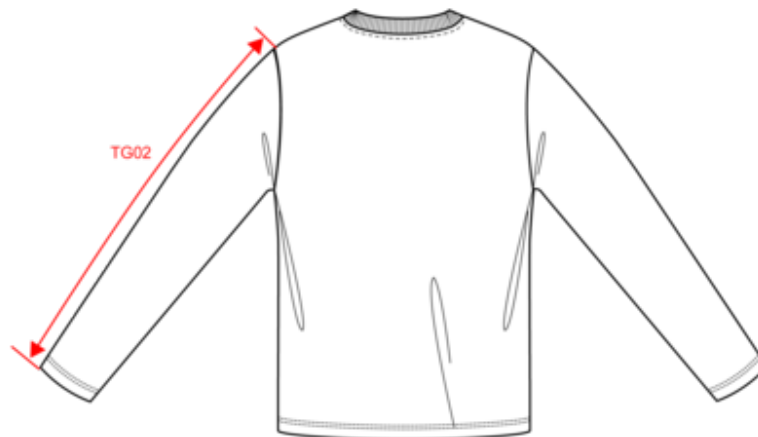
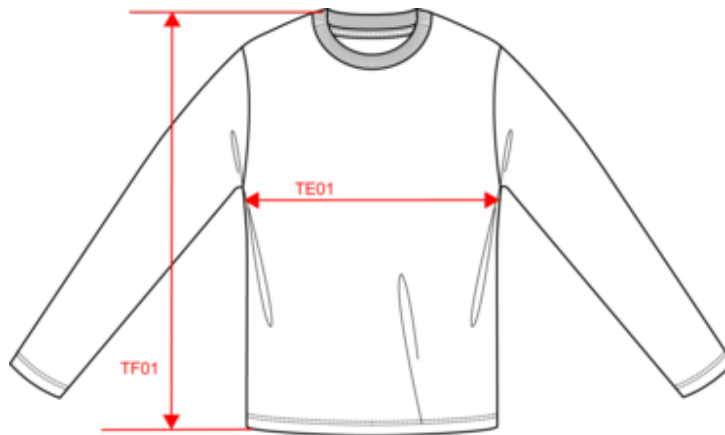


**Certifications**



**NS346**  
Eco-friendly kids' long sleeve t-shirt

Dimensions (cm)



Measurements in cm	4/6 ans	6/8 ans	8/10 ans	10/12 ans	12/14 ans
TE01 - 1/2 chest width at 1.5cm below armhole	33.70	35.40	38.00	41.50	45.00
TF01 - Total height from HSP	44.40	49.20	54.00	58.80	63.60
TG02 - Long sleeve length	39.90	44.10	48.50	53.10	57.70

# NS346

## Eco-friendly kids' long sleeve t-shirt

### Colours information



**Black**  
 RVB : 35,35,37  
 Pantone C : Black  
 Pantone TCX : 19-4004TCX



**Jade Green**  
 RVB : 143,167,162  
 Pantone C : 5575C  
 Pantone TCX : 16-5106TCX



**Navy Blue**  
 RVB : 41,45,57  
 Pantone C : 433C  
 Pantone TCX : 19-4010TCX



**Petal Rose**  
 RVB : 197,159,155  
 Pantone C : 7612C  
 Pantone TCX : 15-1607TCX



**White**  
 RVB : 236,236,252  
 Pantone C : White  
 Pantone TCX : 11-0601TCX

### Logistic



10



50

Sizes	Width (cm)	Height (cm)	Length (cm)	Net weight (kg)	Gross weight (kg)	Pieces/Box	Pieces/Bundle
4/6 ans	40.00000	14.00000	60.00000	5.10000	6.20000	50	10
6/8 ans	40.00000	14.00000	60.00000	5.75000	6.85000	50	10
8/10 ans	40.00000	14.00000	60.00000	6.70000	7.80000	50	10
10/12 ans	40.00000	14.00000	60.00000	7.70000	8.80000	50	10
12/14 ans	40.00000	18.00000	60.00000	8.80000	10.00000	50	10