

KARIBAN

K7006

Girls' chino trousers

- Adjustable waistband thanks to an elasticated inner.
- Ultra-soft enzyme-washed fabric.
- Timeless style suitable for the demands of the school environment.

98% cotton/2% elastane. Enzyme-washed. Waistband with belt loops. Fly with metal button and zip. Two front pockets with over stitching. Two back pockets with piping and ribbed stitching. Elasticated, adjustable inner waistband. Matching herringbone inner strap. Over stitching on crotch, front and back for extra backing. Single over stitched hem finish. No brand label, only a tear-off size tag for easy decoration.



5 ans 6 ans 7 ans 8 ans 9 ans 10 ans 12 ans 14 ans 16 ans 18 ans



240 g/m²

Certifications



More information

Logistic



1



20



TR - Turkey

Customs code



62046239



Camel



Dark Grey



Dark Navy

Also available in version



K7005

K7005

K741

K740

K7005

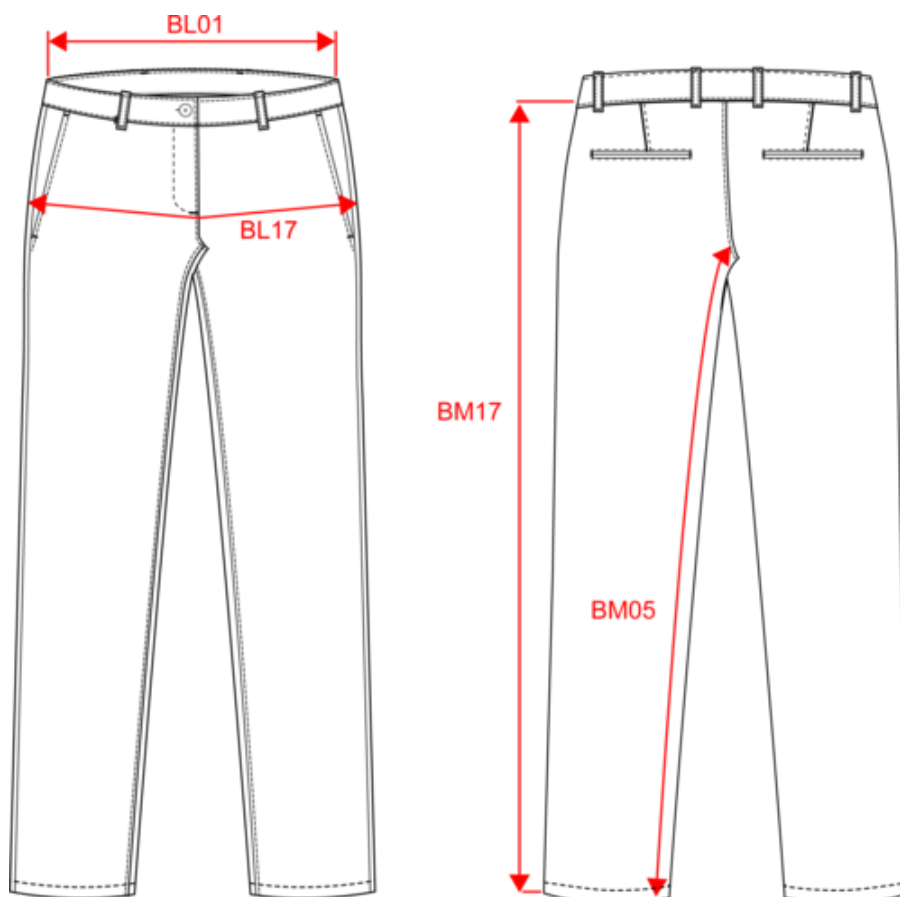


KARIBAN

K7006

Girls' chino trousers

Dimensions (cm)



Measurements in cm	5 ans	6 ans	7 ans	8 ans	9 ans	10 ans	12 ans	14 ans	16 ans	18 ans
BL01 - 1/2 waist width (buttoned up and front band over back band)	27.50	28.50	29.50	30.50	31.50	32.75	34.00	35.50	37.50	39.50
BL17 - 1/2 hip width (measured parallel to waistband)	29.00	31.00	33.00	35.00	37.00	39.25	41.50	44.00	46.00	48.00
BM05 - Inseam length	44.00	48.50	53.00	57.50	62.00	66.50	73.00	77.50	80.00	82.00
BM17 - Side length (waistband excluded)	56.50	62.00	67.50	72.75	78.00	85.00	92.50	98.00	101.50	104.50

KARIBAN

K7006

Girls' chino trousers

Colours information



Camel

RVB : 152,125,96
Pantone C : 874C
Pantone TCX : 17-1038TCX



Dark Grey

RVB : 63,60,60
Pantone C : 447C
Pantone TCX : 19-0000TCX



Dark Navy

RVB : 33,38,45
Pantone C : 426C
Pantone TCX : 19-4007TCX

Logistic



1



20

Sizes	Width (cm)	Height (cm)	Length (cm)	Net weight (kg)	Gross weight (kg)	Pieces/Box	Pieces/Bundle
5 ans	40.00000	15.00000	60.00000	3.40000	4.60000	20	1
6 ans	40.00000	15.00000	60.00000	3.90000	5.10000	20	1
7 ans	40.00000	15.00000	60.00000	4.20000	5.30000	20	1
8 ans	40.00000	15.00000	60.00000	4.60000	5.70000	20	1
9 ans	40.00000	15.00000	60.00000	4.90000	6.00000	20	1
10 ans	40.00000	15.00000	60.00000	5.60000	6.70000	20	1
12 ans	40.00000	15.00000	60.00000	6.10000	7.30000	20	1
14 ans	40.00000	15.00000	60.00000	6.60000	7.80000	20	1
16 ans	40.00000	15.00000	60.00000	7.00000	8.20000	20	1
18 ans	40.00000	15.00000	60.00000	7.50000	8.60000	20	1