

# KARIBAN

K7005

## Boy's chino trousers

- Adjustable waistband thanks to an elasticated inner.
- Ultra-soft enzyme-washed fabric.
- Timeless style suitable for the demands of the school environment.

98% cotton/2% elastane. Enzyme-washed. Waistband with belt loops. Fly with metal button and zip. Two front pockets with overstitching. Two back pockets with piping and ribbed stitching. Elasticated, adjustable inner waistband. Matching herringbone inner strap. Overstitching on crotch, front and back for extra backing. Single overstitched hem finish. No brand label, only a tear-off size tag for easy decoration.



5 ans 6 ans 7 ans 8 ans 9 ans 10 ans 12 ans 14 ans 16 ans 18 ans



240 g/m<sup>2</sup>

### Certifications



### More information

#### Logistic



1



20



TR - Turkey

#### Customs code



62034235



Camel



Dark Grey



Dark Navy

### Also available in version



K7006

K741

K740

K7006

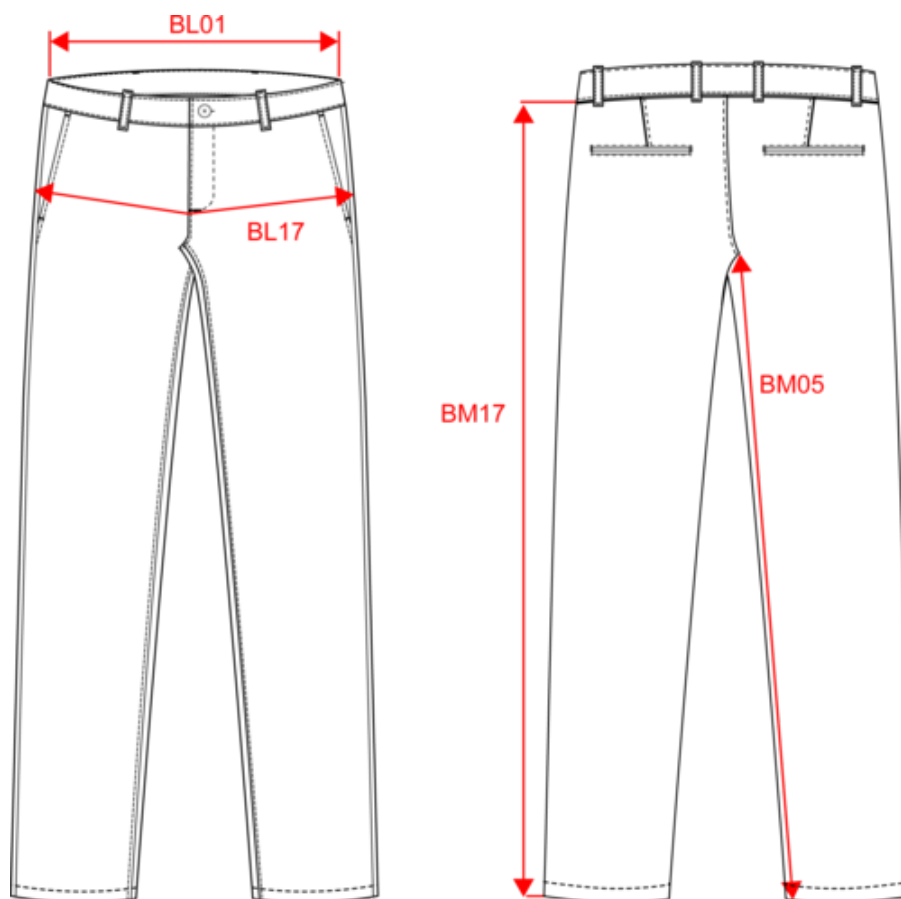


# KARIBAN

K7005

## Boy's chino trousers

### Dimensions (cm)



Measurements in cm	5 ans	6 ans	7 ans	8 ans	9 ans	10 ans	12 ans	14 ans	16 ans	18 ans
BL01 - 1/2 waist width (buttoned up and front band over back band)	27.00	28.25	29.50	30.75	32.00	33.50	35.00	36.50	38.00	40.00
BL17 - 1/2 hip width (measured parallel to waistband)	31.50	33.00	34.50	36.00	37.50	38.50	40.50	42.50	44.50	46.50
BM05 - Inseam length	44.00	48.50	53.00	57.50	62.00	65.50	72.00	78.50	81.00	83.00
BM17 - Side length (waistband excluded)	57.00	62.75	68.25	73.75	79.00	83.50	91.75	99.25	102.75	105.75

# KARIBAN

K7005

## Boy's chino trousers

### Colours information



**Camel**

RVB : 152,125,96  
Pantone C : 874C  
Pantone TCX : 17-1038TCX



**Dark Grey**

RVB : 63,60,60  
Pantone C : 447C  
Pantone TCX : 19-0000TCX



**Dark Navy**

RVB : 33,38,45  
Pantone C : 426C  
Pantone TCX : 19-4007TCX

### Logistic



1



20

Sizes	Width (cm)	Height (cm)	Length (cm)	Net weight (kg)	Gross weight (kg)	Pieces/Box	Pieces/Bundle
5 ans	40.00000	15.00000	60.00000	3.60000	4.70000	20	1
6 ans	40.00000	15.00000	60.00000	3.90000	501.00000	20	1
7 ans	40.00000	15.00000	60.00000	4.30000	5.40000	20	1
8 ans	40.00000	15.00000	60.00000	4.60000	5.80000	20	1
9 ans	40.00000	15.00000	60.00000	5.00000	6.20000	20	1
10 ans	40.00000	15.00000	60.00000	5.30000	6.50000	20	1
12 ans	40.00000	15.00000	60.00000	5.90000	7.10000	20	1
14 ans	40.00000	15.00000	60.00000	6.50000	7.60000	20	1
16 ans	40.00000	15.00000	60.00000	6.90000	8.00000	20	1
18 ans	40.00000	15.00000	60.00000	7.20000	8.40000	20	1