

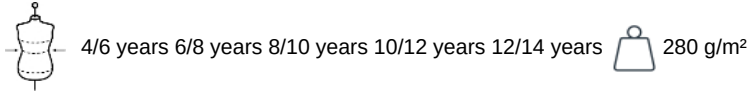
# KARIBAN

K4039

## Kids' hooded sweatshirt

- Made in Portugal: European quality production.
- 3-thread LSF (Low Shrinkage Fleece) fabric: 100% cotton outer surface.
- No label: 100% customisable to your brand.

80% cotton/20% polyester. Combed cotton. 3-ply LSF (Low Shrinkage Fleece) brushed fleece fabric with anti-pilling treatment. Made in Portugal. Straight fit. 1x1 ribbing at the cuffs and hem. Hood lined with jersey cotton. Twin-needle over stitching on shoulders, armholes, cuffs and hem. Matching jersey taped neck inside collar. Kangaroo pocket. Half-circle at the back. Name tag on garment inner. No brand label on the neckline, only a size tag for easy decoration.



### Certifications



### More information

#### Logistic



#### Country of origin



PT - Portugal

#### Customs code



61102099



### Also available in version



K4037

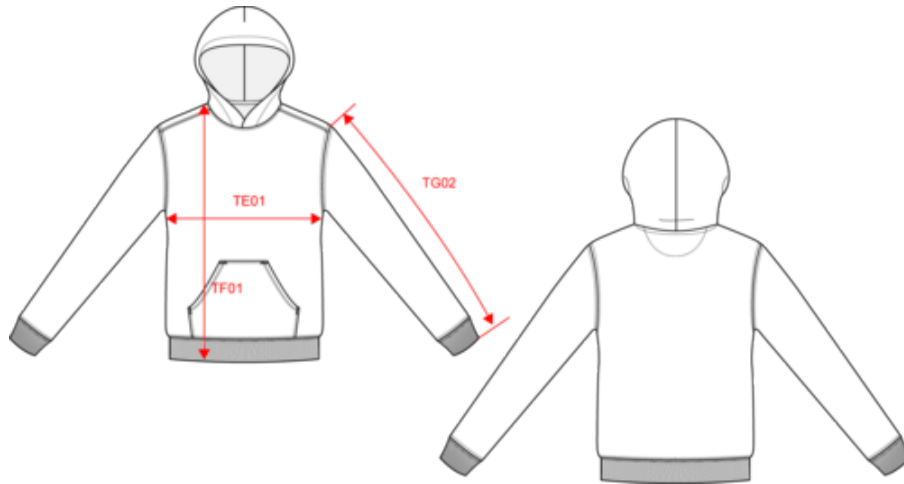


# KARIBAN

K4039

Kids' hooded sweatshirt

## Dimensions (cm)



Measurements in cm	4/6 years	6/8 years	8/10 years	10/12 years	12/14 years
TE01 - 1/2 chest width at 1.5cm below armhole	36.70	38.40	41.00	44.50	48.00
TF01 - Total height from HSP	45.90	50.70	55.50	60.30	65.10
TG02 - Long sleeve length	40.00	44.50	49.25	54.00	59.00

# KARIBAN

K4039

## Kids' hooded sweatshirt

### Colours information



#### Black

RVB : 35,35,37  
Pantone C : 433C / Black  
Pantone TCX : 19-4012TCX /  
19-4004TCX



#### Light Royal Blue

RVB : 53,95,151  
Pantone C : 653C  
Pantone TCX :  
18-4041TCX



#### Navy

RVB : 41,46,56  
Pantone C : 433C / Black  
Pantone TCX : 19-4012TCX /  
19-4004TCX



#### Oxford Grey

RVB :  
Pantone C : Based on Cool gray  
7C  
Pantone TCX : Based on  
16-3850TCX



#### Red

RVB : 195,32,54  
Pantone C : 200C  
Pantone TCX :  
19-1664TCX



#### White

RVB : 236,236,252  
Pantone C : White  
Pantone TCX : 11-0601TCX

Logistic



5



20

Sizes	Width (cm)	Height (cm)	Length (cm)	Net weight (kg)	Gross weight (kg)	Pieces/Box	Pieces/Bundle
4/6 years	40.00000	40.00000	60.00000	5.61000	6.35000	20	5
6/8 years	40.00000	40.00000	60.00000	6.16000	6.90000	20	5
8/10 years	40.00000	40.00000	60.00000	6.81000	7.55000	20	5
10/12 years	40.00000	40.00000	60.00000	7.56000	8.30000	20	5
12/14 years	40.00000	40.00000	60.00000	8.36000	9.10000	20	5