

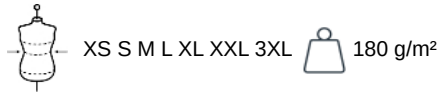
KARIBAN

K2028

Ladies' Organic 180 pique polo shirt long sleeves

- Organic combed cotton.
- Quilted knit and ribbed cuffs.
- No label: 100% customisable to your brand.

100% organic cotton. Combed cotton. Piqué knit. Straight fit. Enzyme-washed. Long sleeves. Side stitching. 1x1 rib neck and cuffs. Placket with two matching buttons. Matching taped neck finish in the main material inside the collar. Backed shoulders. Side slits. Twin-needle overstitched finish on hem. No brand label, only a tear-off size tag for easy decoration.



Certifications



Certified by Ecocert Greenlife.
EGL N°165951 / KARIBAN

More information

Logistic



Country of origin



BD - Bangladesh

Customs code



61061000

Also available in version



K2027

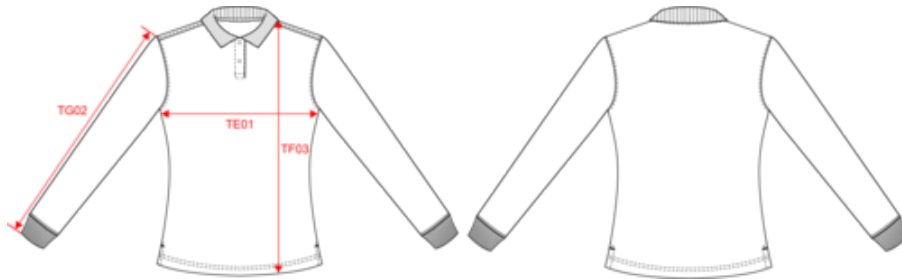


KARIBAN

K2028

Ladies' Organic 180 pique polo shirt long sleeves

Dimensions (cm)



Measurements in cm	XS	S	M	L	XL	XXL	3XL
TE01 - 1/2 chest width at 1.5cm below armhole	43.00	46.00	49.00	52.00	55.00	58.00	61.00
TF03 - Front total height from HSP	61.00	63.00	65.00	67.00	69.00	71.00	73.00
TG02 - Long sleeve length	58.00	59.00	60.00	61.00	62.00	63.00	64.00

KARIBAN

K2028

Ladies' Organic 180 pique polo shirt long sleeves

Colours information



Black

RVB : 35,35,37
Pantone C : 433C / Black
Pantone TCX : 19-4012TCX / 19-4004TCX



Grey Heather

RVB :
Pantone C : Based on 417C
Pantone TCX : Based on 18-5203TCX



Navy

RVB : 41,46,56
Pantone C : 433C / Black
Pantone TCX : 19-4012TCX / 19-4004TCX



White

RVB : 236,236,252
Pantone C : White
Pantone TCX : 11-0601TCX

Logistic



5



30

Sizes	Width (cm)	Height (cm)	Length (cm)	Net weight (kg)	Gross weight (kg)	Pieces/Box	Pieces/Bundle
XS	40.00000	20.00000	60.00000	5.90000	7.35000	30	5
S	40.00000	20.00000	60.00000	6.25000	7.70000	30	5
M	40.00000	20.00000	60.00000	6.65000	8.10000	30	5
L	40.00000	20.00000	60.00000	7.10000	8.55000	30	5
XL	40.00000	20.00000	60.00000	7.65000	9.10000	30	5
XXL	40.00000	20.00000	60.00000	8.05000	9.50000	30	5
3XL	40.00000	20.00000	60.00000	8.50000	9.95000	30	5